



# Bungoona Path

(Dharawal Country)

20 min to 40 min  
20 min to 30 min

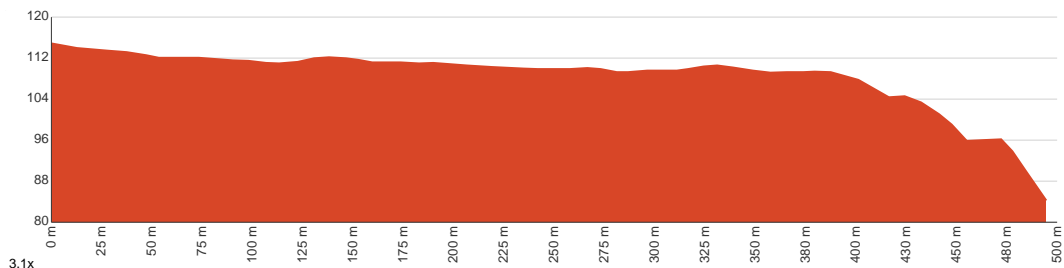
990 m  
Return

↑ 38 m  
↓ 38 m

1  
Smooth & flat



This is a smooth and mostly flat walk with a fantastic lookout in the Royal National Park. The concrete path starts at the Area Office car park, passes a pleasant and usually quiet picnic area, then winds gently down through the bush. The path leads to the fenced Bungoona Lookout, where you can enjoy views over the Hacking River and a large part of the Royal National Park. Take your time to read the signs and enjoy the plants and rock formations along the way. There are plenty of bench seats along the way to rest. Let us begin by acknowledging the Dharawal people, Traditional Custodians of the land on which we travel today, and pay our respects to their Elders past and present.



Class 1 of 6  
Smooth and hardened path

Quality of track	Smooth and hardened path (1/6)
Gradient	Flat, no steps (1/6)
Signage	Clearly signposted (1/6)
Infrastructure	Generally useful facilities (such as fenced cliffs and seats) (1/6)
Experience Required	No experience required (1/6)
Weather	Weather generally has little impact on safety (1/6)

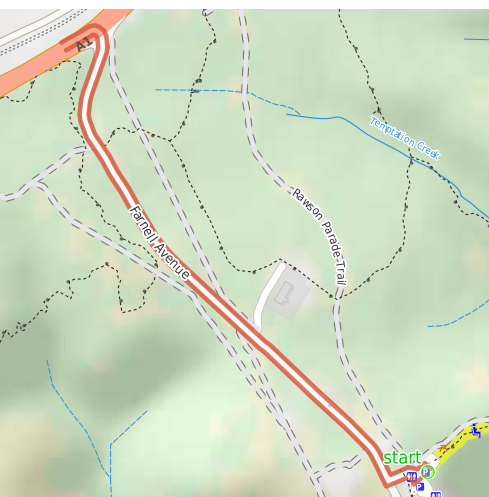
## Naturally Accessible

**Slope summary:** Mostly flat or gentle slopes. No section steeper than 1:12.

**Surface summary:** Smooth & hard concrete surface the full length.

**Getting to the start:** From Princes Highway, A1

- Turn on to Farnell Avenue then drive for 1.5 km
- Turn left and drive for another 70 m
- Turn right and drive for another 10 m
- Turn sharp left and drive for another 40 m



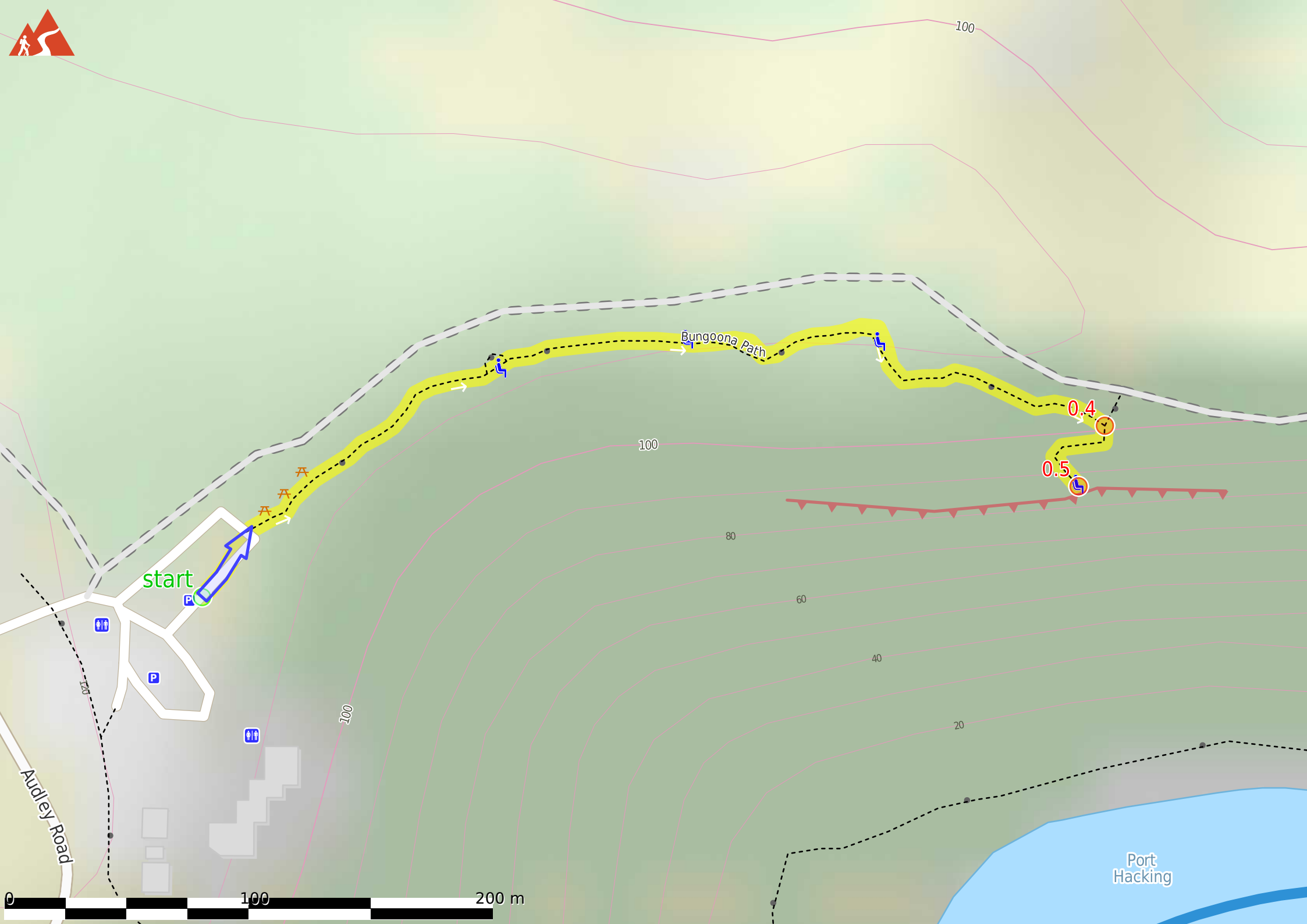
## Before you start any journey ensure you;

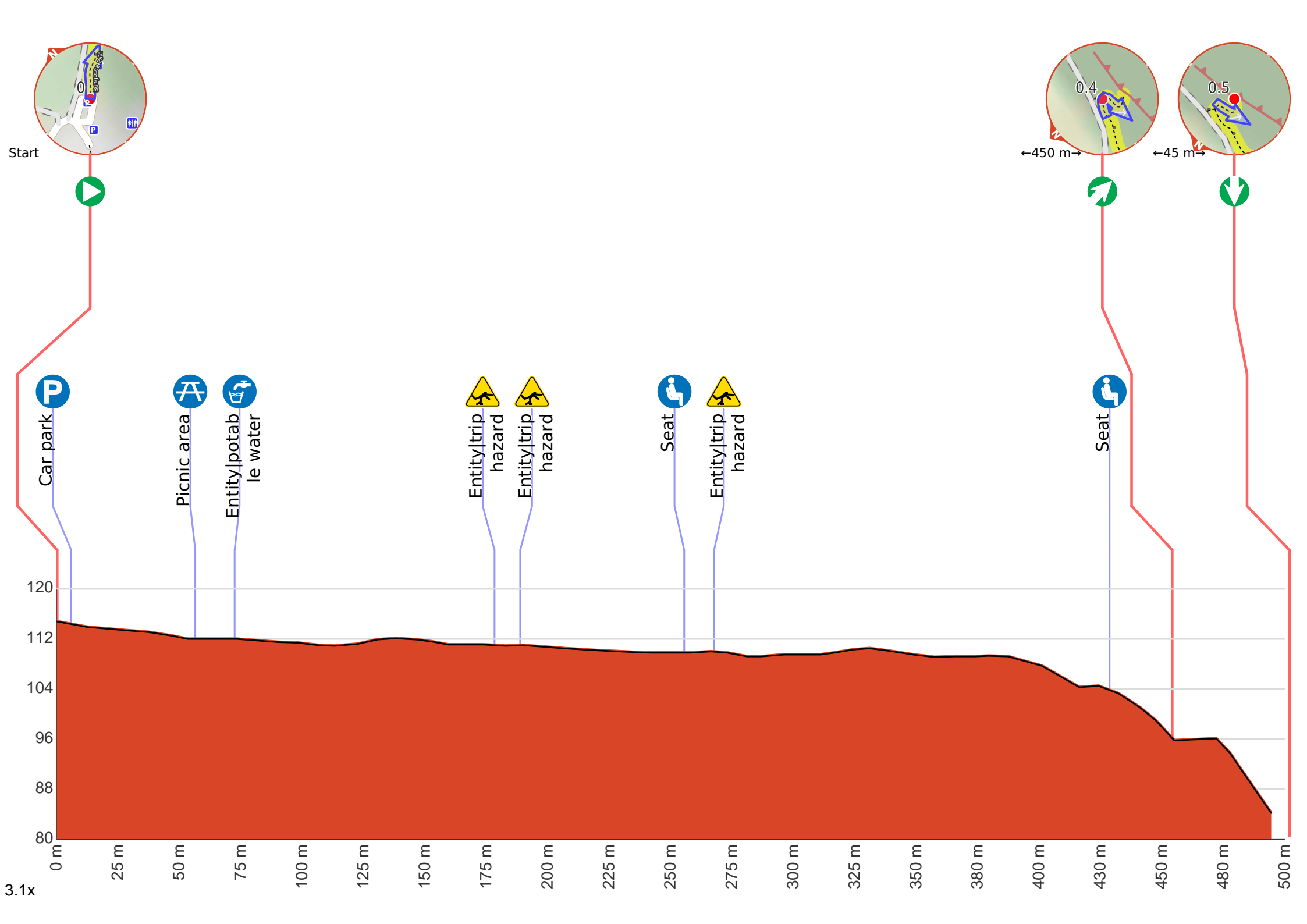
- Tell someone you trust where you are going and what to do if you are late returning
- Have adequate equipment, supplies, skills & knowledge to undertake this journey safely
- Consider weather forecasts, park/track closures & fire dangers
- Can respond to emergencies & call for help at any point
- Are healthy and fit enough for this journey

If not, change plans and stay safe. It is okay to delay and ask people for help.

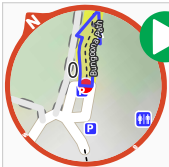
Share  
Bushwalk.com  
/j/6DNCOK







**Getting started:** From the eastern end of the Royal Area Office car park (at 159 Farnell Ave, Royal National Park), this walk follows the 'Bungoona Path' sign along the concrete path toward the picnic area (visible through the trees). This walk heads gently downhill along the concrete path and soon bends left to come to the water fountain (on the right) and picnic area (on the left).



**Start.**



There is a car park (about 7 m back from the start).



After 50 m find the "Bungoona Picnic area" (8 m on your left).



Bungoona Picnic area in the Royal National Park, is found at the start of the Bungoona Path about 10m from the Royal Area Office car park. The picnic area provides 4 picnic tables, a tap and a drinking fountain. The tables are accessible across a grass area about 6-15m away from the concrete path. There is a reasonable amount of natural shade and the picnic area is not as heavily used as some of the other areas in the park.



After another 15 m find the "Potable Water" (on your left).



A drinking fountain 66cm high, located on the paved area beside the path.



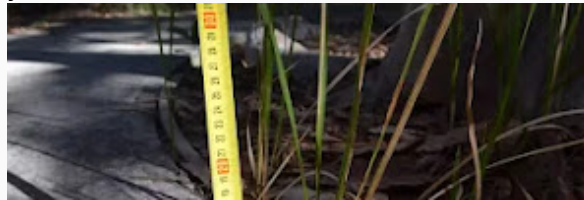
After another 105 m find the "Trip Hazard" (on your right).



A 4cm trip hazard between two concrete slabs.



After another 10 m find the "Trip Hazard" (on your left).



An 8cm trip hazard between two concrete slabs. After another 65 m come to the "Seat".



A timber slat bench seat, 53cm high, 47cm deep and 2.1m wide, located on the path.



After another 10 m find the "Trip Hazard" (on your left).



A 6cm trip hazard between two concrete slabs.



After another 160 m find the "Seat" (on your right).



A timber slat bench seat, 53cm high, 47cm deep and 2.1m wide, located on the path.



After another 25 m **veer right**, to head along Bungoona Path.



After another 45 m come to "Trip Hazard".



A 4cm trip hazard between two concrete slabs. "Seat".



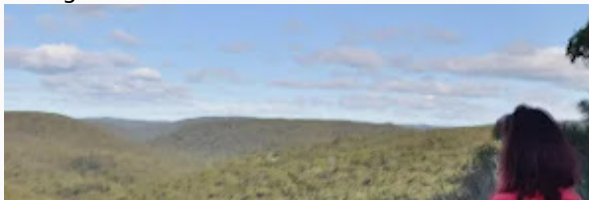
Two timber slat bench seats, 51cm high, 47cm deep and 2.1m wide. Seats are on a concrete platform at the lookout.



Turn around here and retrace the main route for 490 m to get back to the start.



"Bungoona Lookout".



Bungoona Lookout in the Royal National Park provides fantastic views over the Hacking River and distant views across the tops of the surrounding hills. This is a fenced (metal fence, 103cm high) wheelchair accessible lookout on a concrete platform with 2 bench seats.